



# Sustainability Initiatives

Delivered by the  
Education & Community  
Climate Action Group

**Environmental Services**

July 2024 – June 2025





# Contents

Message from the Group Manager ..... 5

Group achievements ..... 6

Delivering on Auckland Council’s strategic priorities ..... 8

Our context..... 9

Our 2024/25 focus areas ..... 10

Focus Area 1 | Support community groups to do more ..... 12

Focus Area 2 | Deliver resilience programmes effectively ..... 16

Focus Area 3 | Partner for impact..... 18

Focus Area 4 | Evaluation to inform future focus ..... 22

Focus Area 5 | Māori capacity to meet Māori aspirations ..... 24

Focus Area 6 | Communication, advocacy and storytelling ..... 26

Projects in progress..... 28







# Message from the Group Manager



This year, despite mounting climate, social and economic challenges, our communities have stepped forward with remarkable leadership and innovation.

The Auckland Climate Grant continues to support diverse community-led initiatives including climate workshops in playcentres, churches and community centres; a seniors for climate action network; and grass-roots transport initiatives – like the Waterview Bike Train.

Pacific perspectives and values have been embedded through MANAVA for Climate Resilience, a community-led project that brings together Pacific climate leaders in Tāmaki Makaurau to work alongside communities, building shared understanding of climate risks and practical ways to prepare.

Young people are bringing communities together to restore and care for local places, building skills they’ll carry into the future through EnviroSchools. At Te Hononga ā Iwi in Rosedale, Year 7 and 8 students from Westminster Christian School have restored streams, sown cover crops, tested water and soil and built a community food garden.

Māori-led climate action has been expanded through Resilient Marae, now supporting 13 marae with te taiao plans and solutions, from solar energy to hazard planning, while Rangatahi-led Mātātahi Taiao empowered 20 Māori youth to build their knowledge and confidence to take action for te taiao alongside mana whenua and marae. This growing movement is elevating rangatahi as leaders, knowledge holders, and climate solution designers.

Community resilience has strengthened in West Auckland following the 2023 floods with focused support from across Auckland Council, including Climate-Ready Neighbourhoods, an engagement model which was successfully initiated with more than 40 community groups last year.

These achievements reflect our focus on supporting community groups and young people, building Māori capacity and developing resilience programmes to ensure we are better prepared for the future.

As we look ahead, I’m both grateful and energized by the creativity and commitment driving progress toward a thriving, connected Tāmaki Makaurau prepared for whatever challenges come our way.

Sincerely,

**Sue Travaglia**  
**Group Manager, Sustainability Initiatives**



# Group achievements

**\$636,000**  
funding from  
partnerships  
and non-rates  
revenue to  
deliver projects

**\$1.4**  
million of  
local board  
projects  
delivered

**Over 80,000**  
Aucklanders engaged  
in taking  
climate action

**CO<sub>2</sub>**  
An estimated **4,800**  
tonnes of CO<sub>2</sub>e  
reduced

Over  
**5,000**  
people have calculated  
their carbon footprint  
using FutureFit.nz  
this year

Over  
**6,000**  
Aucklanders  
received  
home energy  
advice

Over  
**80,000**  
trees planted by  
students through  
Trees for  
Survival

**300**  
community  
groups  
supported

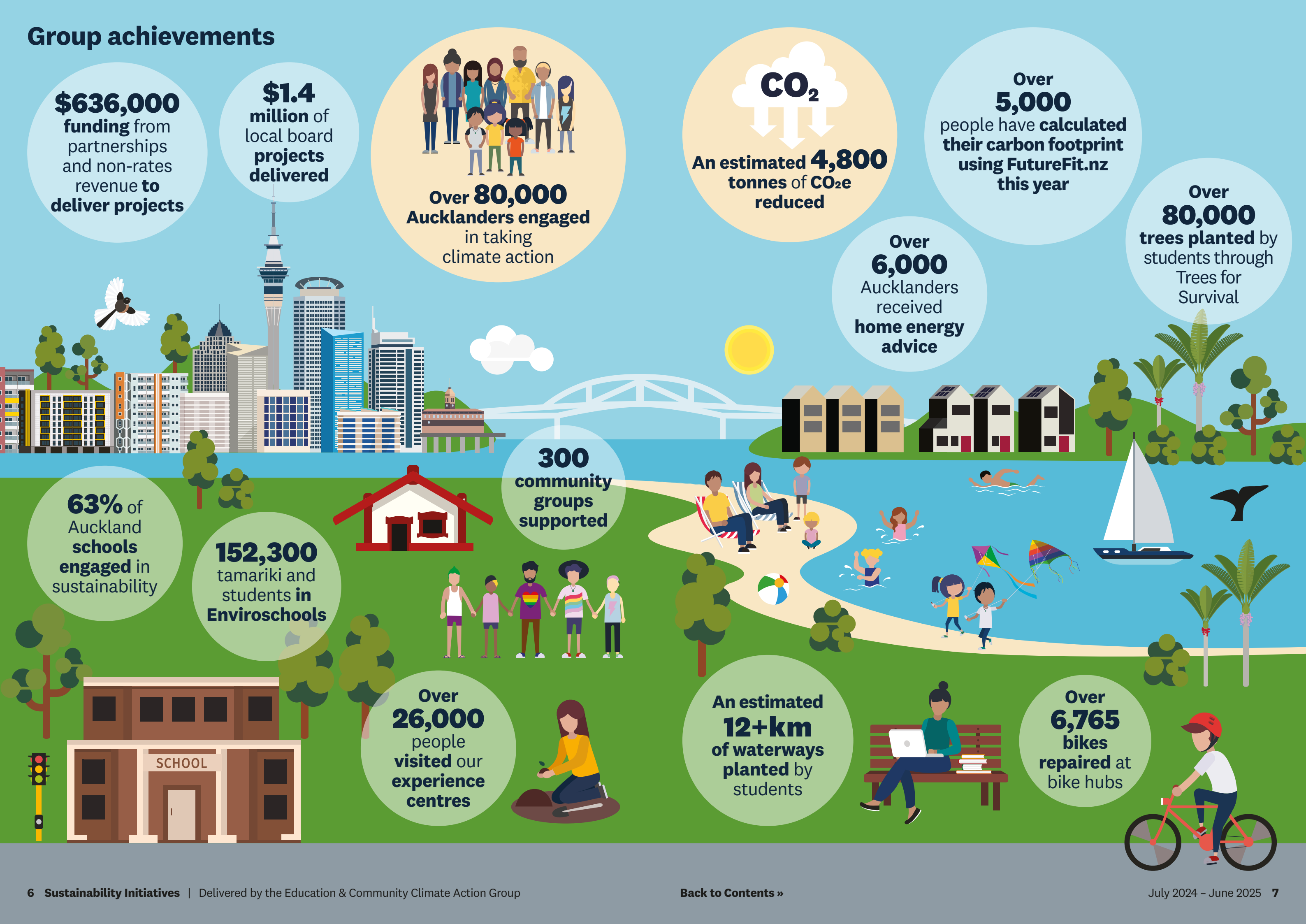
**63%** of  
Auckland  
schools  
engaged in  
sustainability

**152,300**  
tamariki and  
students in  
Enviroschools

Over  
**26,000**  
people  
visited our  
experience  
centres

An estimated  
**12+km**  
of waterways  
planted by  
students

Over  
**6,765**  
bikes  
repaired at  
bike hubs



# Delivering on Auckland Council’s strategic priorities

- 1

**Auckland Plan**  
We are committed to reducing emissions and ensuring we are resilient to the impacts of climate change.
- 2

**Long Term Plan**  
Responding to climate change, improving our water quality and natural environment, delivering for Māori designed with Māori.
- 3

**Te Tāruke-ā-Tāwhiri: Auckland’s Climate Plan**  
Delivering on the Community priority of the plan through contributing to halving emissions by 2030 and net zero by 2050 and preparing Aucklanders for the impacts of climate change.
- 4

**Environmental Services Business Plan**  
We deliver services to protect the natural environment and reduce the impacts of climate change to meet our legislative obligations under the Biosecurity Act, the Resource Management Act and national and regional plans and strategies, while empowering Māori and community-led action.
- 5

**Education and Community Climate Action (E&CCA) Business Plan**  
We make sustainability action accessible and relevant for the diverse communities of Tāmaki Makaurau in partnership with Māori.
- 6

**Education and Community Climate Action (E&CCA) Performance Measures**
  - Number of Aucklanders engaged in lowering emissions or building climate resilience.
  - Percentage of schools engaging in sustainability action programmes.
  - Carbon emissions reduction (measured by CO2e avoided).

## Our context

Latest figures show that Auckland’s overall emissions, while slightly increasing, are beginning to plateau and are just under 10% lower than the 2016 baseline. The work of the Education and Community Climate Action Group has contributed to this by supporting Aucklanders to reduce their household energy emissions, which has seen a 25% drop in emissions since 2021. This is despite the

population increasing over the same period. However, transport emissions have continued to rise and are responsible for over 40% of the region’s CO2e inventory. As shown in Figure 1 there is still a lot of work needed by everyone across Tāmaki Makaurau to achieve the goal of halving emissions by 2030.

### Auckland’s annual gross emissions

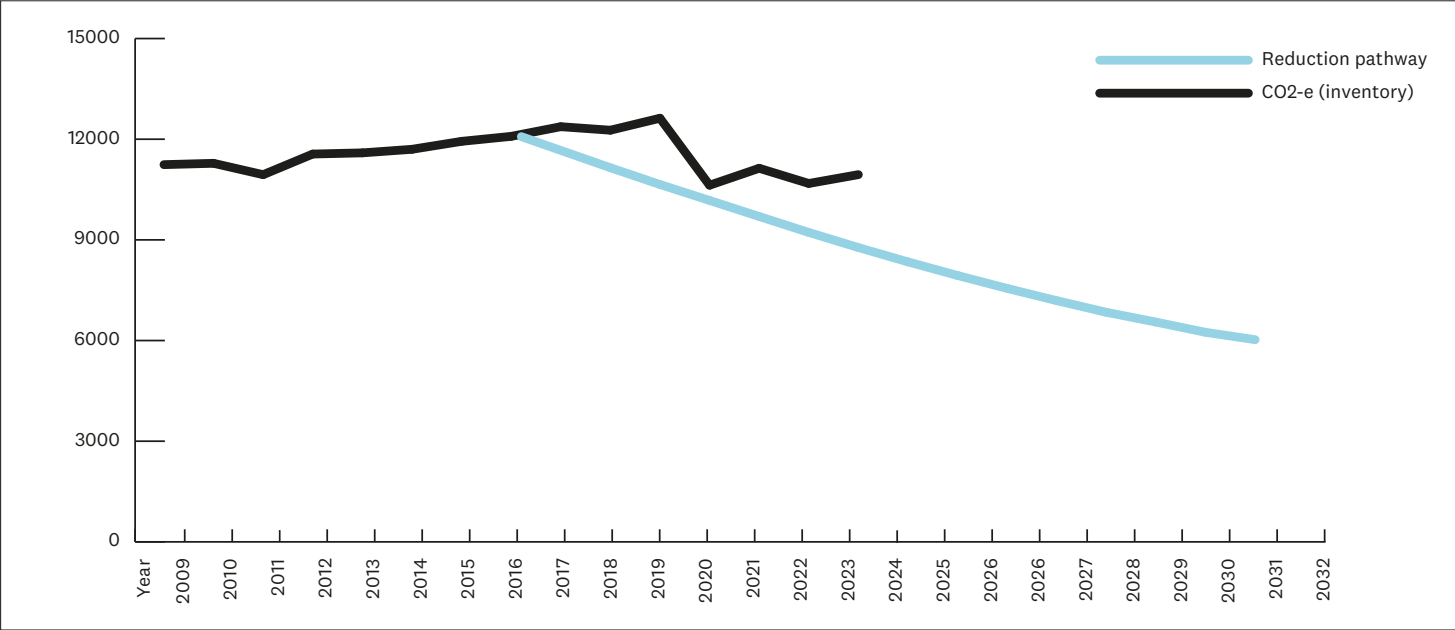


Figure 1.

## Our vision

**Climate Action Teams**  
The majority of people living in Auckland are taking effective action to reduce emissions and are building resilience to climate disruption to create a regenerative, sustainable Tāmaki Makaurau.

**Sustainable Schools Team**  
Young people and their whānau are hopeful and empowered to take action for a regenerative, sustainable Tāmaki Makaurau and are enabled to build resilience to climate disruption.

# Our 2024/25 focus areas

1

## Support community groups to do more

Build capacity and capability of community and young people / youth to empower collective action through providing targeted support, funding or professional development.

2

## Delivering resilience programme effectively

Increase resilience to climate impacts working with Māori, youth (in particular 18-24 yr olds) and communities that need us most.

3

## Partner for impact

Partner with business, local and central government, Māori, youth, schools and community organisations to scale climate action.

4

## Evaluation to inform future focus

Use evaluation and research to inform project development and prioritisation of work programmes.

5

## Māori capacity to meet Māori aspirations

Build Māori capacity and capability to deliver projects that meet Māori aspirations for youth leadership, climate resilience and Te Taiao.

6

## Communication, advocacy and storytelling

Showcase best practice climate action / sustainability by those living in Auckland and develop tools and resources to communicate key actions that can be taken.





## MANAVA for Climate Resilience



Supporting Pacific Aucklanders to build resilience to climate disruption.

Pacific Vision Aotearoa (PVA) is strengthening Pacific communities’ resilience to a changing climate through leadership, knowledge sharing, and practical skills. The MANAVA for Climate Resilience project, supported by the Community Climate Action team, brings together Pacific climate leaders in Tāmaki Makaurau to work alongside communities, building shared understanding of climate risks and practical ways to prepare. Resources, videos, and a website offer climate information grounded in Pacific perspectives and values.

PVA is also supporting food resilience with their Fill the Pantry project, where workshops teach preservation skills like fermenting and pressure canning empowering families to store seasonal produce and reduce food waste, even without electricity. Participants learn to preserve using traditional ingredients like taro in take-home jars for their pantries. These skills strengthen household resilience and maintain cultural food practices.

Watch the videos on PVA’s YouTube channel to learn more. »



54  
Aucklanders  
engaged



11  
workshops  
delivered



81  
workshop  
participants

Find out more »

## Community restoration powered by Enviroschools

Our Sustainable Schools team are empowering young people to lead environmental action by connecting Enviroschools with local community projects.

Young people are bringing communities together to restore and care for local places, building skills they’ll carry into the future. Through the Enviroschools programme in Tāmaki Makaurau – supported by the Natural Environment Targeted Rate students learn to think and act sustainably, while participating in hands-on projects that restore the environment.

At Te Hononga ā Iwi in Rosedale, Year 7 and 8 students from Westminster Christian School are restoring streams using chemical free regenerative agriculture and sustainability principles. They’ve sown cover crops,

created seed bombs, built composters, tested water and soil, and built a community food garden. This collaborative project brings together 65 organisations including iwi, schools, universities, retirement villages, businesses, and local groups. 50 youth leaders take on roles such as youth consultant, working bee coordinator and pest plant mapping leader. Already, three of these leaders have stepped into environmental jobs, showing the lasting impact of this collective effort.



65  
organisations  
took part



students walk  
2.4km  
to and from  
school to site



10,000m<sup>2</sup>  
land restored

Find out more »



Activating local climate action



Unlocking new investment and sparking impactful community-led climate action.

The Albert-Eden Climate Activator programme is empowering communities to turn local climate goals into real-world action. Now in its third year, developed and supported by the Community Climate Action team, the programme connects people and groups, helping them lead initiatives such as Greenwood's Corner 'Go Green' festival.

By providing guidance, resources, and building local networks, the programme has helped unlock over \$70,000 dollars of additional investment. This has boosted projects like the Waterview Bike Train, which has grown its volunteer base and expanded routes, and Seniors for Climate Action, which has run new community workshops and awareness campaigns.

With strong community demand, the activator supports diverse groups to bring their projects to life. By brokering resources and sharing practical knowledge, the activator helps turn collective energy into tangible change creating a stronger, more climate-resilient Albert-Eden where local people lead the way.

Auckland Climate Grant

Fuelling grassroots climate action and future-ready communities.

The Auckland Climate Grant helps communities across Auckland lead bold, local climate action. This year, \$372,150 supported projects that cut emissions, built resilience, and backed Māori-led solutions. Together, these initiatives are making a real impact, reducing climate risks and strengthening communities for the future.

One highlight has been supporting Climate Club to deliver 18 Climate Fresk workshops across Tāmaki Makaurau, reaching playcentres, churches, business groups, golf clubs, and retirement villages.

These fun, science-based workshops make climate change easier to understand and empower people to take action.

Participants built their knowledge of climate impacts and left inspired to make changes in their communities. As one attendee shared, “we have an official Envirogroup who are starting to plan projects, thanks to the Climate Fresk...”

Together, these projects are helping communities across Auckland lead the way on climate action.



unlocked additional  
**\$70,000**  
in funding



**230**  
Climate Action  
Network members



**200+**  
events held

[Find out more »](#)



**\$372,150**  
supporting **27**  
community-led projects



**14,741**  
Aucklanders  
engaged



**9,556**  
volunteers hours  
valued at  
over  
**\$265,000**

[Find out more »](#)



## Building youth resilience

Building resilience to climate impacts through young people turning their climate ideas into real-world action.



Inspired by their visit to the Zero Waste Zone Experience Centre, Swanson School received a grant to regenerate soil and boost their food resilience. Through their project, they’re taking practical steps to care for their place and strengthen their community.

Sustainable Schools Experience Centres connect young people with te taiao (the environment), building understanding of climate risks and empowering them with actions to make a difference.



Young people have the ideas and energy to help shape a more resilient future, and our Mana Ora (healthy land and healthy people) grants are helping turn those ideas into action. We provide these grants to enable young people to lead projects that build climate resilience in their schools and communities.



**17,956**  
students and adults  
engaged in climate  
resilience education  
through experience  
centres



**\$155,630**  
grants  
provided for  
student-led  
projects



**15** projects  
delivered to  
increase flood  
resilience

## Climate ready neighbourhoods

Empowering West Aucklanders with the skills, leadership, and connections to build climate resilience in their communities.

More than 220 people in West Auckland have come together to strengthen their resilience after the 2023 “Anniversary” floods. Supported by Community Waitākere and the Climate Action Solutions team, a dedicated facilitator has worked alongside 40 groups across Henderson-Massey, Waitākere Ranges, and Whau local boards offering tailored support to build skills, confidence, and connections.

Through workshops, mentoring, asset mapping, and community events, participants have deepened

their understanding of climate risks and learned how to organise collectively in response to future events. The project has also helped grow local leadership, with seven new leaders and seven new groups emerging to support neighbourhood readiness.

By fostering neighbourhood connections, growing new leaders and strengthening connections to te taiao (the environment) West Auckland communities are building resilience and will be better prepared to face future challenges together.



**40** groups  
involved



**7**  
new resilience  
groups formed



**220**  
workshop  
participants

[Find out more »](#)



## Empowering rangatahi to care for te taiao

We partner with Toimata Foundation to grow long-term, community-led climate action grounded in Te Ao Māori values.

Te Aho Tū Roa is empowering rangatahi and communities to care for te taiao (the environment), while strengthening connection between people, and place. Delivered through te reo Māori, the programme works with Māori medium education providers, iwi, hapū and communities to grow the capacity needed for resilience.

Supported by Toimata Foundation and Auckland Council, it offers mentoring, professional development, resources, and networks to enable long-term, community-led change.

In the Kaipara, the programme helped deliver a marae-based wānanga, bringing together 184 students from seven local schools, along with over 80 educators, partners and families. Guided by mana whenua Ngāti Whātua o Kaipara, students learned about restoring their environment, protecting taonga species, and managing pests, while building new partnerships and developing action projects.

By aligning with mana whenua aspirations and fostering collaboration, Te Aho Tū Roa is creating a future where Tāmaki Makaurau taiohi (young people) and communities are connected, capable, and leading the way in caring for te taiao.



## Supporting Aucklanders in energy hardship

Bringing public and private partners together to help households reduce costs and emissions.

By working together with other organisations, we're helping Auckland families make informed energy choices that lower costs, improve efficiency, and reduce emissions.

Families received tailored support to manage their energy use through energy advice programmes delivered in partnership with Habitat for Humanity, EcoBulb, Vector and the Ministry of Health.

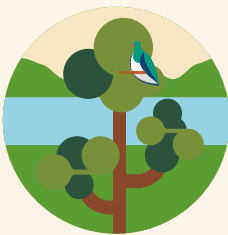
Vector played a key role by analysing electricity use and providing detailed reports that gave households valuable

insights into their consumption patterns. Households were then supported to improve energy efficiency and create warmer, healthier homes through practical upgrades and advice such as installing energy efficient lightbulbs, efficient shower-heads and curtains.

These collaborations strengthen community resilience, empowering households to reduce energy bills and carbon emissions, and make sustainable energy choices.



**30+**  
partnerships  
developed



**3500+**  
native trees  
planted



**500+**  
rangatahi engaged in  
environmental action

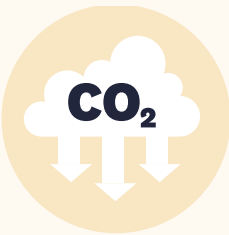
[Find out more »](#)



**1,492**  
Households  
engaged



**Over  
24,000**  
installations  
installed



**An estimated  
400+ tonnes**  
of CO<sub>2</sub> emissions  
reduced

[Find out more »](#)



Different Dinners



Training leaders to make healthy plant-based eating easy, enjoyable and something they can share within their communities.

Across Tāmaki Makaurau, local leaders are inspiring their communities to enjoy more plant-based meals supporting better health and lowering emissions. We have partnered with Diabetes Foundation Aotearoa to deliver the Different Dinners Train the Trainers programme using practical workshops to upskill community activators, health coaches, fitness trainers, and medical professionals.

Participants learned to prepare healthy, affordable, and easy-to-cook plant-based meals, building confidence and skills to share within their own networks. By training leaders who go on to train others, the programme creates a ripple effect extending its reach into communities often missed by traditional initiatives.

This cost-effective model is strengthening grassroots health promotion while making sustainable food choices more accessible for Aucklanders helping people eat well, save money, and reduce their carbon footprint.



Sustainability Challenge Adventure Race

At the heart of the Sustainability Challenge Adventure Race is partnership and collaboration.

Now in its 15th year, the Sustainability Challenge Adventure Race (SCAR) series has been inspiring young people to connect with nature and take action for te taiao (the environment). Powered by partnerships between our Sustainable Schools team, Regional Parks, Lactic Turkey, and 48 supporting organisations, this fun-filled event sees ākonga (students) navigate a two-hour course tackling hands-on sustainability challenges from identifying bird calls to learning pest management skills.

Over the 15 years, more than 120 schools, 10,000 ākonga, and a wide network of partners have taken part in caring for the environment and showing how young people can make a real difference. This year the series has brought together many ākonga, kaiako (teachers) and whānau to compete across 3 races, including its biggest event yet at Wenderholm Regional Park.

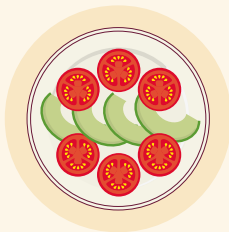
By connecting ākonga with parks and supporting them through strong partnerships, SCAR is growing the next generation of environmental leaders across Tāmaki Makaurau.



8 workshops delivered



51 trainers trained



An estimated 24 tonnes of CO<sub>2</sub>-e reduced



40 schools took part



857 ākonga (students) raced!



25 partners involved

[Find out more »](#)



## Evaluation driving programme development

Evaluation is a key part of our approach, guiding how we shape, improve, and deliver our projects for greater impact.



Evaluation is helping us strengthen our approach to engaging Aucklanders in climate action. Four key projects were reviewed this year covering our community grant programme, sustainable food initiatives, community climate education and student-led environmental programmes.



The evaluations confirmed the value of action that is led by community and youth which results in benefits such as improved knowledge, practical skills, and greater community capacity to take climate action. The Auckland Climate Grant was found to be an effective lever, amplifying community-led action, raising awareness and reducing emissions through transport, food, and energy projects.



To build on this, new evaluation surveys have been developed for our climate resilience programmes, helping us better understand how we’re supporting communities and young people to build resilience and adapt to climate impacts.

This evidence base is shaping our next steps, ensuring we focus resources and efforts where they can have the most impact.

## Supporting local community planning for climate change

Local Climate Action Plans are developed in partnership with local communities.

Local Climate Action Plans provide a three-to-five-year roadmap with key steps to lower emissions and adapt to climate change. We use feedback from residents, mana whenua and local community groups to capture existing action, identify climate risks, and highlight community priorities.

Local Boards adopt the plans and allocate funding through their work programmes to enable prioritised actions. This is often used by a Climate Action Activator, community champions who connect residents with projects and resources to facilitate the delivery of climate action.

Actions are tailored to each Local Board but generally cover mitigation and adaptation projects including restoring local streams, creating community gardens, improving walking and cycling paths, or supporting development of Shoreline Adaptation Plans.

The plans align with the eight focus areas of Te Tārūki-ā-Tāwhiri: Auckland’s Climate Plan to ensure a consistent, region-wide approach.

The 10th Local Board Climate Action Plan for the Waitākere Ranges has been completed and is being considered for adoption by the Local Board in August.



**4** project evaluations completed



**97** community climate projects funded



**160** student-led planting and habitat restoration projects



**131** community stakeholders involved in Waitākere Ranges Climate Action Plan



**10** Local plans developed to date



**40** Local projects delivered last year



## Developing rangatahi leadership

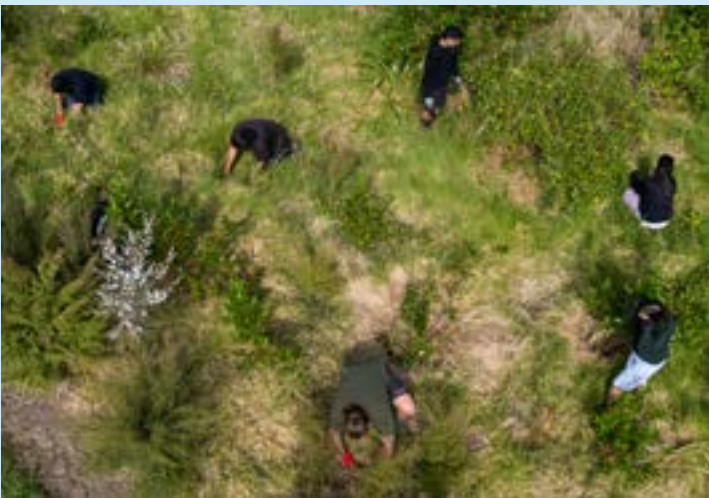
Empowering rangatahi Māori to lead climate action grounded in mātauranga (the holistic Māori knowledge system).

Mātātahi Taiao is a rangatahi-led kaupapa (programme) empowering Māori youth to take action for te taiao, alongside mana whenua and marae across Tāmaki Makaurau. This growing movement is elevating rangatahi as leaders, knowledge holders, and climate solution designers.

A kāhui (group) of 20 rangatahi stay actively involved through regular wānanga (workshops), research, and hands-on restoration work, contributing to kaupapa such as monitoring taonga species, planting, and seed harvesting. Mātātahi Taiao deliver a Gateway programme, connecting rangatahi to whenua (land) workplace experience. Three rangatahi are now employed to lead taiao planning within their iwi and marae, creating new pathways in environmental leadership.

Five iwi: Ngāti Tamaoho, Te Ahiwaru, Te Uri o Hau, Te Kawerau ā Maki, Ngāti Tamaterā and five marae: Haranui, Whiti te Rā o Reweti, Kakanui (Te Kia Ora), Tahuna Pā, Puatahi are engaged, co-developing taiao plans through intergenerational wānanga on wai (water), kai (food), whenua (land), and energy resilience, while aligning with Resilient Marae to drive systems change.

Mātātahi Taiao also work together with groups like Te Pu a Ngā Maara, Kumara Collective, and Restoring Takarunga Hauraki.



## Resilient Marae

Marae across Tāmaki Makaurau are building climate resilience through Māori-led, place-based environmental solutions.

Resilient Marae is a Māori design-led initiative supporting marae across Tāmaki Makaurau to lead local climate responses. Through mātauranga Māori and tailored technical support, marae are developing taiao plans, exercising kaitiakitanga (building connections to environment), and strengthening whānau wellbeing.

Since 2023, 13 marae have been engaged: Umupuia, Pūkaki, Makaurau, Whiti te Rā o Reweti, Kakanui (Te Kia Ora), Hoani Waititi, Tāhuna Pā, Haranui, Te Aroha Pā, Reretewhioi, Puatahi, Ngā Hau e Wha, and Te Kawerau ā Maki's new marae.

Each marae receives seed funding and as a group, they've delivered over 12 wānanga (workshops) on topics such as māra kai (food gardens), solar energy, stormwater, puna wai (spring water) assessments, cultural revitalisation, and hazard planning. Highlights include Te Aroha Pā's 132 solar panels and taiao resilience planning at Pūkaki.

Resilient Marae also connects with kaupapa like Mātātahi Taiao, supporting rangatahi leadership and regional systems change.



**5 marae and 5 iwi**  
actively participating



**20 rangatahi**  
representing  
Mātātahi Taiao



**10 wānanga**  
delivered



**13 marae**  
supported



**12 wānanga**  
delivered



**\$1.1 million**  
in funding support

[Find out more »](#)



Tools, resources and inspiring stories

Empowering communities, youth, and mana whenua with essential tools, resources, and success stories to inspire climate action.

Communities across Tāmaki Makaurau are already taking action to protect the environment and prepare for a changing climate. By sharing their stories and providing practical resources, we support and celebrate their leadership while helping others get started.

Those already under pressure often feel the impacts of climate disruption first and the hardest. That’s why our communication focuses on accessibility, inspiration, and enabling action.

Over the past year, we’ve reached 36,748 Aucklanders with environmental and climate stories.

From the bike train in Waterview to the Ōtanerua Reserve eco-neighbourhood, local stories highlight creative, community-based solutions.

Through platforms like Live Lightly, people can explore tools – from flood maps and interactive games, to learning resources that help them understand risks and take action.

Our goal is to equip people with knowledge and confidence to care for the places they love and plan for the future together.

View the latest projects below



Kohuora Park Schools Nature Day »



5 ways Māngere Community Enviro Hub is helping the community grow »



Exploring local Howick Enviroschools »



The Bike Train – Pedaling Toward a Greener Future »



Ōtanerua Reserve Eco-Neighbourhood »



Empowering Future Kaitiaki: Youth-led Climate Action Along Te Puhinui Awa »



Small South Auckland School Plants a Forest »



Solar panels and batteries provide the missing link for Te Henga / Bethells Beach »



Rangatahi Environmental Action Leaders (REAL) »



## Community Climate innovation

Supporting Community-led Energy and Transport initiatives.

### Communities innovating for energy and electrification

Seed funding for innovative energy projects in Waiheke and Grey Lynn is helping communities rethink how they power their homes building more sustainable and energy-resilient neighbourhoods. In schools, Sustainable Schools and The Wonder Project are partnering to bring the Power Challenge to life, supporting young people to learn about renewable energy and become the next generation of energy innovators.



### Communities leading transport solutions

Community partners are leading the way in making active transport easier and more appealing. Initiatives like e-bike loan schemes, Get a Bike events and the Wednesday Challenge are encouraging children and families to try travelling differently one day a week – while schools track and celebrate their collective impact.



[Find out more »](#)

## Helping communities plan for climate change

This year we began new trials to test innovative climate action opportunities.

### Partnerships reimagining food sovereignty

An innovative kaupapa is exploring how park land can be used to grow local sources of kai and revitalise māra kai knowledge and practice within iwi and mataawaka communities. By bringing together community organisations, iwi, and Auckland Council teams, these partnerships have the potential to reimagine food sovereignty for Tāmaki Makaurau – strengthening resilience, connection to te taiao, and local food systems.



### Growing resilience through games and learning

Building resilience to climate disruption in Tāmaki Makaurau is a shared challenge one that calls for collaboration between communities, Auckland Council, government, and businesses. To support this, new tools are being trialled with communities, including The Adaptation Game a playful way to explore how neighbourhoods can plan and respond to climate change. It’s being tested alongside resources like the Township Flooding Game and Climate Fresk workshops, which help people understand climate science and inspire practical action.



[Find out more »](#)



